

## BootMan User Guide

### Purpose

BootMan lets you select applications from a list, for starting them automatically every time you turn the phone on. Its main use is to quickly bring the phone into the desired state.

### Compatibility

BootMan can be installed and executed on all smartphones running on Symbian 9.x with UIQ 3.x. Full functionality, including autostart, is provided for SonyEricsson phones only.

### Installation

The distribution package can be installed directly by using the PC install program, or after uploading the .sis file to the phone. Refer to your phone's User Guide for details on installing.

### Application list

BootMan's main view lists all applications installed on the phone. Programs that are selected for boot-time execution are shown at the top of the list.

Icons at the right side represent the status for each application. Programs started automatically at boot-time are marked with green icon background. The final foreground application's icon is emphasized.

To set or change the startup properties for the selected application, press the Set toolbar button, thus bringing up the *Properties* view (see below).

The selected application can be launched immediately by tapping on the Start toolbar button.

The autostart list can be executed manually by selecting the Manage/Execute all command. This is useful for testing your autostart list, or for bringing your phone to the preferred state at any time. To clear the autostart list, select the Manage/Reset all menu item.

To change the order of autostarted applications, use the arrow buttons on the toolbar.

### Application properties

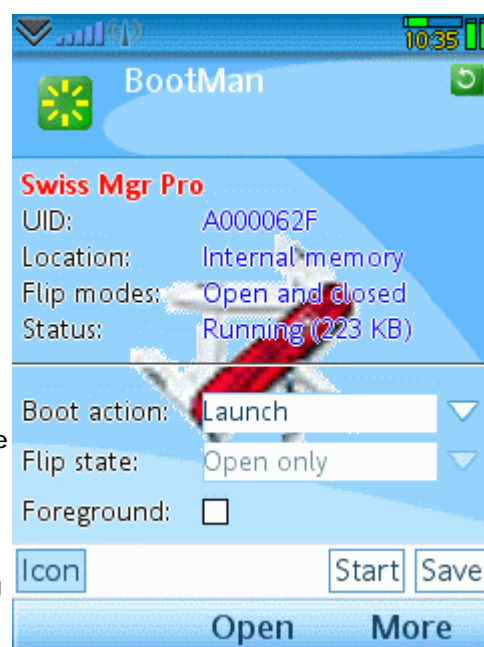
The upper part of the screen shows various features of the application:

- **UID:** Unique application identifier.
- **Location:** The install location of the program.
- **Flip modes:** Mode(s) of the flip when the program can be displayed.
- **Status:** Current execution status, with memory consumption if running.

On the lower part of the screen you can set the required behavior of the application:

- **Boot action:** Select the action to perform on the program at boot time. Set the option to *Launch* to autostart the application.
- **Flip state:** Select the flip state(s) required for the above action.
- **Foreground:** Check to display the program after the boot sequence completed.

Press the **Icon** button on the toolbar to toggle displaying the application icon as the view background. To accept changes and return to the list view, press the **Save** button on the toolbar. To exit the view without saving changes, press the **Back** button.



## Preferences

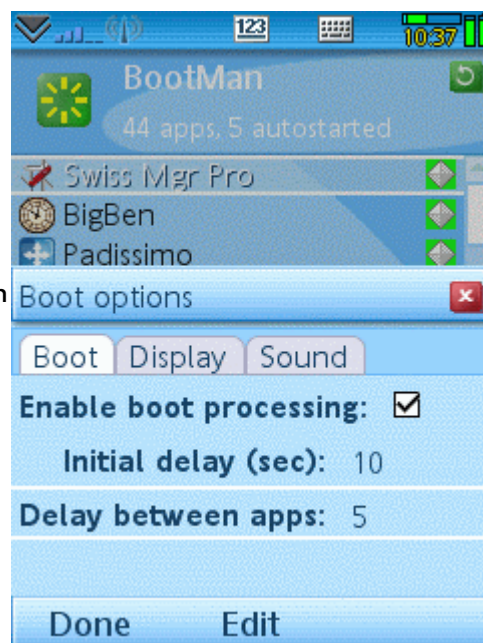
The **List mode** option allows selecting extra services for the application list. Available choices are:

- **Plain:** Select when the other options listed below are undesired.
- **Incremental search:** Select when you want to search the list for applications by typing or drawing a name.
- **Drag scrolling:** Select to allow dragging the list using finger or stylus.



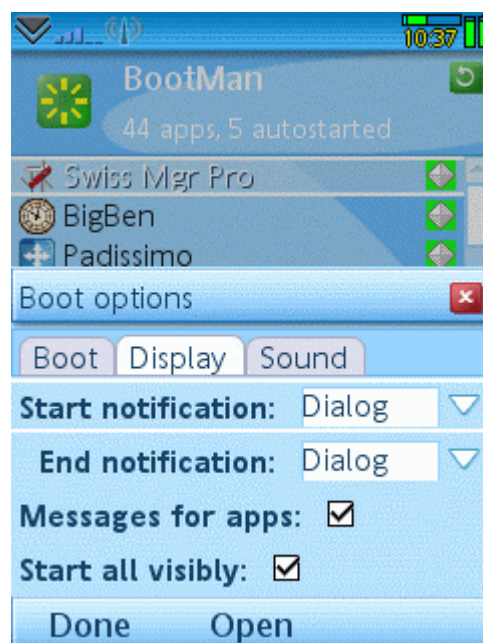
## Boot options - Boot

- **Enable boot processing:** This option acts as a main switch for BootMan. Check the option to allow executing your autostart list when the phone is started up. The status icons for autostart applications are dimmed when boot-time processing is disabled.
- **Initial delay:** Specify an optional delay in seconds to wait before launching the applications begins. A delay can be necessary if you experience problems with starting programs too early during boot.
- **Delay between apps:** Set the number of seconds to wait before starting each program. Increasing the delay may be necessary in case fast processing of multiple applications causes some conflict.



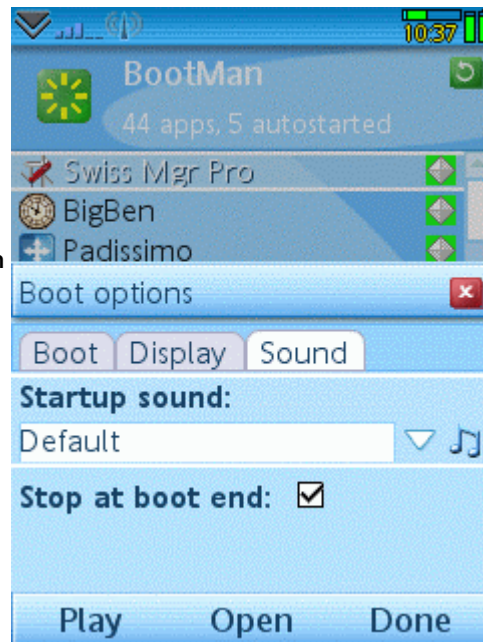
## Boot options - Display

- **Start notification:** Select what notification to display when the boot sequence starts. Selecting *Dialog* is recommended, as it asks for confirmation, thus allowing to cancel starting up programs, which may come handy the autostart list contains an application that causes a conflict. Note that the confirmation dialog is displayed only in flip open mode.
- **End notification:** Select the type of signal shown when the boot sequence completes. The *Dialog* type displays a report on the number of started programs, and the memory status.
- **Messages for apps:** Check the option to request a message displayed whenever a program is being launched or displayed.
- **Start all visibly:** Check the option to start all applications in foreground, which may be necessary to avoid some conflicts.



## Boot options - Sound

- **Startup sound:** Select a sound file to play when the boot process begins. Note that a lengthy sound may not be appropriate on all occasions.
- **Stop at boot end:** Check the option to stop playing the sound as soon as the boot process completes. If the option is unchecked, the entire sound will be played even after the boot module has finished its job.



## System information

- **Uptime:** Time elapsed since the last boot, shown as days:hours:minutes:seconds. This is the time your phone has been running for continuously without restart. A phone in heavy use that was not restarted for a long time is likely to lose free memory usable for running programs.
- **Boot date:** Date of last boot.
- **Boot time:** Time of last boot.
- **Free memory:** The amount of available runtime memory in megabytes.

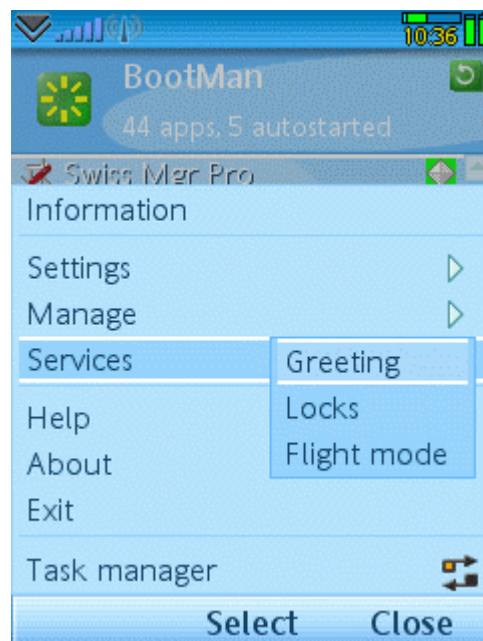
The uptime and memory values are colored according to status. Values in green color indicate that the phone is in proper condition. The red color indicates a condition that may require attention, that is closing applications or restarting the phone.



## Services

The Services menu provides access to some system features related to the boot process. These services are available on SonyEricsson phones only.

- **Greeting** - Set the text for the greeting which is displayed during system startup.
- **Locks** - Set various lock options that can be checked during system startup.
- **Flight mode** - Control the system prompt displayed upon pressing the Power button.



## The boot process

BootMan lets you select applications to launch automatically after the phone is restarted. This process is called *autostart*, and is used to quickly bring the phone to the desired state.

BootMan has a separate autostart module, which is executed automatically each time the phone is started up. During execution, the startup sound (if any) is played, and a confirmation dialog may be displayed (as set in *Boot options/Display*, see above). Next the applications set to launch are started up in the fore- or background, depending on the *Start all visibly* option. Finally, the program marked as foreground (or, if no such program, the last started application) is made visible on screen.

Details of the boot process (like confirmations, messages, delays, and sound) can be configured in the *Boot options* dialog (see above). Applications are launched according to their order in BootMan's application list. You can change this order using the arrow buttons at the left part of the toolbar.

The boot-time sequence can also be executed manually by selecting the **Manage/Execute all** menu item. This is useful for testing your autostart list, or for bringing the phone to a preferred state at any time.

## BootMan FAQ

### General

**Q: Why do I need BootMan?**

**A:** Bootman comes handy when you notice you manually load the same applications every time you start up your phone. BootMan does this automatically for you, quickly bringing the phone to the state you like. You can set any number of programs to be launched at boot time.

**Q: How does BootMan differ from other autostart utilities?**

**A:** BootMan has several unique features, like unlimited number of autostart applications, unparalleled configurability (flipmode-dependant execution, delay between executions, launch message, startup sound), and various convenience functions (access to boot-related services, uptime and other system information).

**Q: Which phones is BootMan compatible with?**

**A:** BootMan can be installed and executed on all smartphones running on Symbian 9.x with UIQ 3.x. Full functionality, including autostart, is provided for SonyEricsson phones only.

**Q: Do I need to run BootMan all the time?**

**A:** No, BootMan only needs to be run when you want to change your autostart applications, or use the other features provided by BootMan. When you are done, you can exit BootMan to save operating memory. The boot processor component of BootMan will automatically execute your autostart list next time you turn your phone on, without invoking the configuration part of BootMan.

**Q: Can BootMan determine and gather all programs that are started by other utilities?**

**A:** Various applications may use their own methods for autostart, and BootMan can not access those features. BootMan however was designed to handle all your autostart needs, so you can choose to disable the autostart feature of other programs and let BootMan manage them all, using one convenient interface and a high level of configurability.

### Autostart

**Q: How do I select programs for starting automatically?**

**A:** In BootMan's main view select the program you want, then press the *Set* toolbar button. In the displayed application properties view select *Launch* as the *Boot action*, then press the *Save* toolbar button. The selected program is now shown at the top of the application list with a green icon, and will be executed at startup.

**Q: How many programs can I autostart?**

**A:** The number of programs that can be handled by BootMan is not limited. However, it is not recommended to start more applications than you actually use, to save memory.

**Q: How do I see which applications are autostarted?**

**A:** The programs that you selected for processing by BootMan are displayed at the top of the application list, and marked by a distinct status icon with green background at the right hand side.

**Q: What are the icons shown on the right side of the application list?**

**A:** Non-processed programs are marked by a light gray icon. Applications that are launched by BootMan have green icon background. The program which will be displayed in the foreground has an emphasized icon. When autostart is disabled in the *Boot options/Boot* dialog, all icons have a gray background.

**Q: In what order does BootMan load the programs?**

**A:** In the order of their appearance on the autostart list. Newly added autostart programs go to the end of list, but you can reorder them using the *arrow* buttons on the toolbar. At boot time, after all autostart programs were launched, the foreground program is displayed. The foreground program is the last autostart program, or the one you set as foreground in the *Properties* view.

## Configuration

**Q: What to do if programs tend to be launched too early at startup?**

**A:** In *Preferences/Boot* you can set a delay BootMan should wait before starting to launch programs, and also a delay to wait between loading individual applications. Use these settings if you experience any conflict when launching programs in fast sequence.

**Q: How does BootMan support flip modes?**

**A:** BootMan is flipmode-aware, that is the startup execution can behave differently depending on flip mode, according to how you configure the individual applications. BootMan itself works in flip open mode only, which is more appropriate for convenient configuration.

**Q: Can I start programs depending on the flip mode?**

**A:** In the *Flip state* selector of the Properties view you can specify if a program should be processed in any flip mode, or if you want to restrict it to open or closed mode.

**Q: How to stop displaying the large background icon?**

**A:** Toggle the *Icon* toolbar button.

**Q: What are the three arrow buttons on the toolbar?**

**A:** The leftmost arrow places the selection bar at the first list item. The other two arrows move the selected autostart item down- and upwards, respectively, to allow changing the order of launching applications.

**Q: Can I test my startup sequence?**

**A:** Selecting the *Manage/Execute all* menu item executes the boot processor module. This facility is useful for testing and also any time when you want to work with the same set of applications like at startup time.

**Q: Is it possible to temporarily disable the autostart, without losing my startup list?**

**A:** In the *Boot options/Boot* dialog clear the *Enable boot processing* checkbox. This will disable executing the boot process, while preserving the autostart list. Note that this switch may not disable the startup sound.

**Q: Can the startup process be interrupted?**

**A:** A confirmation dialog is displayed at the start of the boot process, if you checked the respective option in *Boot options/Boot*. Select "No" in the dialog if you do not want to execute the boot sequence. This option can be a life-saver if you have set a misbehaving application to start on boot. Note that the confirmation dialog is not available in flip closed mode. When started from BootMan's *Manage/Execute all* menu item, the boot module can be terminated by tapping the same menu item (*Manage/STOP*).

**Q: Can I cancel playing the startup sound?**

**A:** You can disable the sound by setting the phone to silent mode. Alternatively, start BootMan and select the uppermost *Manage* menu item (which displays "STOP" while the boot module is executing). It is recommended to select a sound file in the *Boot options/Sound* dialog whose duration is adequate to you.

*We at CellPhoneSoft hope you enjoy using BootMan, and find it useful in making your smartphone a more pleasant experience. Thank you for using our product!*