

Bunch Launch User Guide

Purpose

Bunch Launch allows starting up configurable groups of multiple applications at once, for quickly bringing the phone to a desired state.

Compatibility

Bunch Launch can be installed and executed on all smartphones running on Symbian 9.x with UIQ 3.x.

Installation

The distribution package can be installed directly by using the PC install program, or after uploading the .sis file to the phone. Refer to your phone's User Guide for details on installing.

General

Bunch Launch can optimize using your phone by simultaneously executing several programs. The applications that are launched at once are categorized into *groups*. When first started up, Bunch Launch prompts you to create some default groups. You can then change the groups at will (see below).

The following components are responsible for supporting the functions of Bunch Launch:

- **Manager module:** The visible part of Bunch Launch, used to define, configure and examine groups of applications that are then processed by the Executive module. In this document the term *Bunch Launch* generally refers to the Manager module.
- **Executive module:** The internal engine which runs whenever processing (executing) a group. The Executive module launches applications, displays informative messages, performs memory cleanup, and exits as soon as processing the group has completed. The Executive module is able to accept a numeric parameter that determines which group is to be executed. If the parameter is not passed, then the group marked as the *Default group* is processed.
- **BL Starter:** Available as a separate application, this component calls the Executive module directly with one of the groups. The application can be invoked with a numeric parameter that specifies the group to be executed. See more details about BL Starter below.

Main view

Bunch Launch has a single Main view, for convenient management of all the application's services. The Main view consists of two separate lists (see below), each occupying one half of the screen. You can switch between the lists by tapping on the upper/lower half of the screen, or, on phones that do not offer a touch-screen, by using the left/right navigation keys.

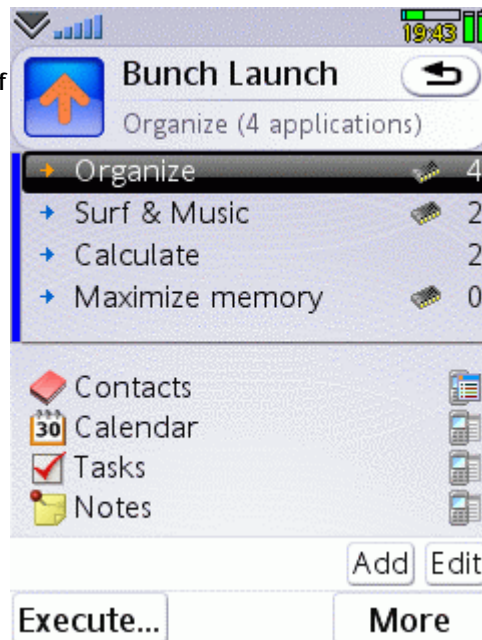
Group list

The upper half of the Main view lists groups of applications that can be executed separately. Each line of the Group list displays the group name, the number of applications contained in the group, and some status icons related to how the group is executed.

Iconic symbols that can be present in each line of the Group list are the following:

- ➔ **Default group:** The group which is processed when the Executive module is called without specifying the group number as parameter.
- ➔ **Non-default group:** Group that is not executed, unless the Executive module is called with the group number as parameter. The main component of Bunch Launch lets you execute any one of the groups.
- 🗑️ **Maximize memory:** Perform memory cleanup before executing the group.




To change options for the group, use the *Group options* dialog (see below).



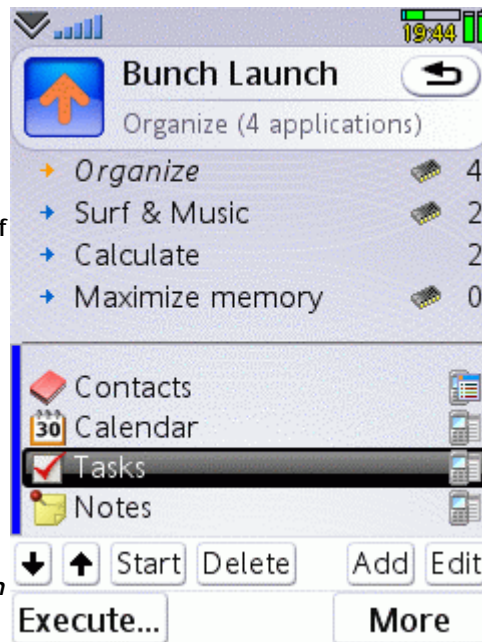
Application list

The lower half of the Main view lists applications that belong to the group selected in the Group list. Each line of the Application list displays the application icon, the application name, and a status icon that reflects how the application is executed.

The iconic status symbol present at the right-hand side of each line of the Application list can be one of the following:

-  **Invisible start:** The application is started up in the background.
-  **Visible start:** The application is started up in the foreground.
-  **Foreground:** The application is brought to foreground after the whole group is executed.

To change options for the application, use the *Application options* dialog (see below).



Commands

Application commands are provided as Main menu items, toolbar buttons, and/or hotkeys.

Available commands include the following:

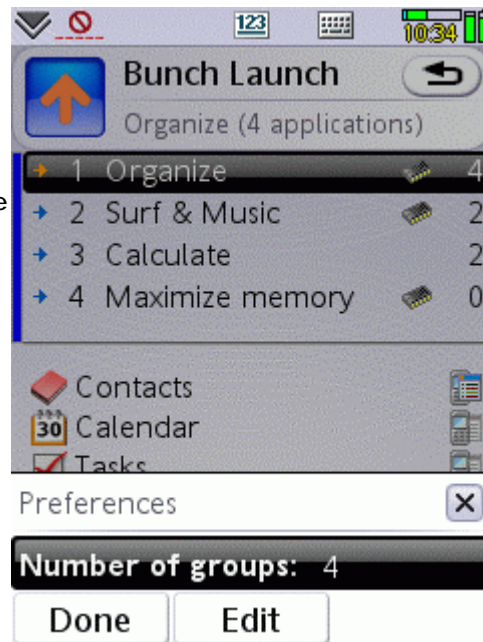
- **Preferences:** Set preferences for the whole application. Available in the Main menu's Settings cascade.
- **Execute group:** Invoke the Executive module to process the selected group. On non-touchscreen phones the Call key is used as a shortcut.
- **Group options:** Set preferences for the selected group. Linked to the Edit toolbar button and the Confirm key when the group list is focused.
- **Application options:** Set preferences for the selected application. Linked to the Edit toolbar button and the Confirm key when the application list is focused.
- **Add applications:** Select applications to include in the selected group. On non-touchscreen phones the Video call key is used as a shortcut.
- **Start application:** Launch the selected application.
- **Delete application:** Delete the selected application from the current group. The Clear/DEL key is used as a shortcut when the application list is focused.
- **Clear group:** Delete all applications from the selected group. The Clear/DEL key is used as a shortcut when the group list is focused.
- **Application Down/Up:** Move the selected application down/upwards. Available when the application list is focused.
- **Switch lists:** Set the selection focus on the other one of the two available listings. Available via the the Left/Right navigation keys and the Main menu on non-touchscreen phones.
- **Zoom:** Set the font size in the Main view.

Preferences

The Preferences dialog is used to set options that affect the whole application.

Available options include:

- **Number of groups:** Provide the number of executable groups that Bunch Launch handles. The number of displayed groups can be set between 1 and 10. When setting the number to a lower value, the contents of groups not currently visible are preserved, and come to effect when the group number is increased again.



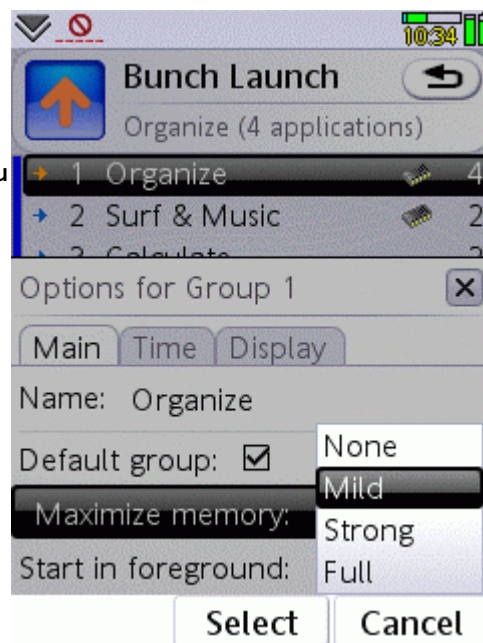
Group options - Main

The Group options dialog is for setting parameters that define how the group will be executed. You set the options for each group separately. The dialog is invoked by tapping on the selected group, by using the *Edit* toolbar button, or by executing the respective main menu command.

Options available in the Main tab include:

- **Name:** You can assign an informative name for the group which is shown in the Group list and when the group is executed.
- **Default group:** The group marked as default is executed when the Executive module is called without specifying the group number as parameter.
- **Maximize memory:** Select an option to perform memory cleanup before executing the group.
Mild closes all non-system applications.
Strong ends system applications as well, like Main menu, LinkBoy, etc..
Full closes even "sensitive" system applications, like Activity menu and SecurityApp, and provides the biggest amount of free memory for starting a group. Note that using the Full option may crash the phone if you enabled a lock with password.

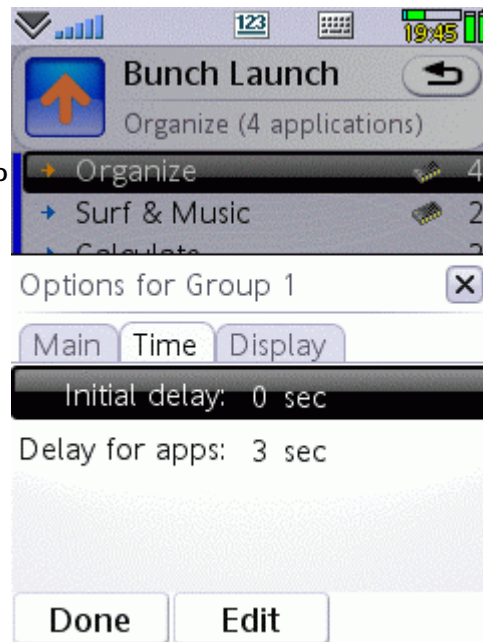
- **Start in foreground:** Select which applications will be started up visibly in the foreground.



Group options - Time

Options available in the Time tab include:

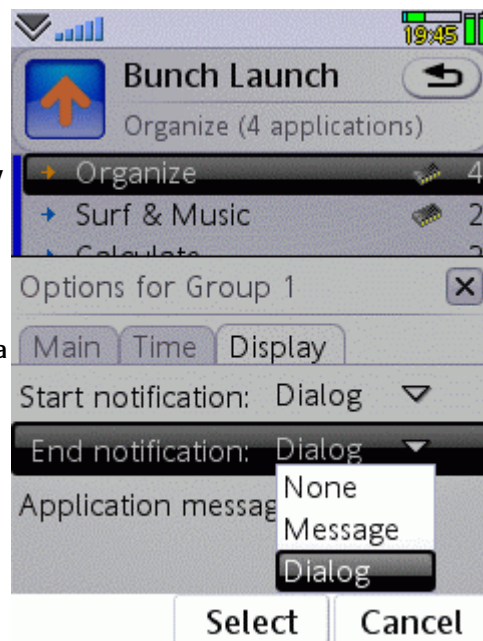
- **Initial delay:** Specify the delay in seconds to wait before processing the group begins.
- **Delay for applications:** Set the number of seconds to wait before starting each program. Increasing the delay may be necessary in case fast processing of multiple applications causes a conflict.



Group options - Display

Options available in the Display tab include:

- **Start notification:** Select the type of notification to display before executing the group. Selecting *Dialog* lets you cancel processing the group, which may come handy if you experienced a problem with some application.
- **End notification:** Select the type of notification to display after executing the group. The end notification reports the number of processed programs as well as memory status.
- **Application messages:** Check the option to request a screen message displayed whenever a program is processed.

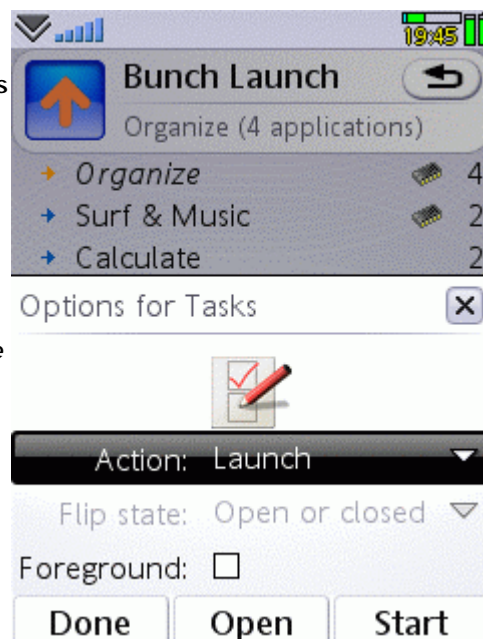


Application options

The Application options dialog is for setting parameters that define how the application behaves when its group is being executed. You set the options for each application separately. The dialog is invoked by tapping on the selected application, by using the *Edit* toolbar button, or by executing the respective main menu command.

Options available in the dialog include:

- **Action:** Select the action which is to be performed on the program when the group is executed. Selecting *None* will delete the program from the group.
- **Flip state:** Select the flip state(s) required for executing the program. This option is only available on phones that feature a flip keypad.
- **Foreground:** Check the option to display the program on screen after processing the whole group has completed.



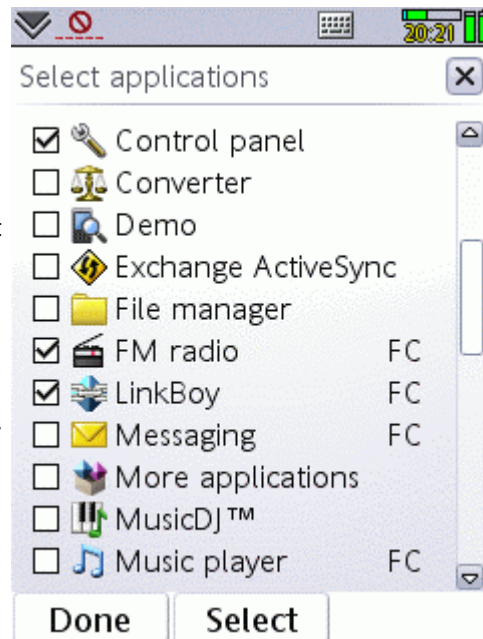
Adding applications

When selecting the *Add applications* command (either from the toolbar or the main menu), the application selector dialog is invoked.

The dialog lists all applications installed on the phone, and lets you select those programs that you want to execute with the currently selected group. Programs that are already present in the group are not listed.

To select applications for inclusion, mark them on the checkbox at the left-hand side, and press the *Done* button.

To delete an application from the group, exit the selector dialog, and use the respective toolbar button or Main menu command, or press the Clear/Del key.



Executing groups

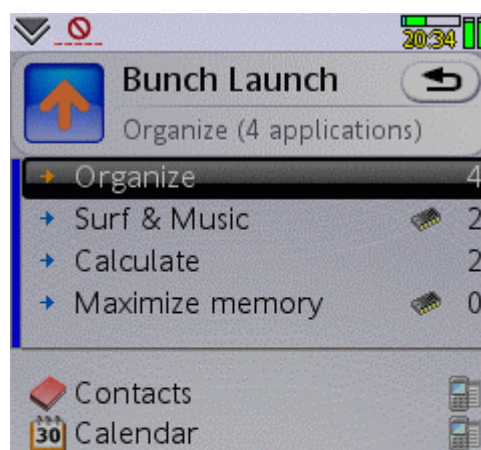
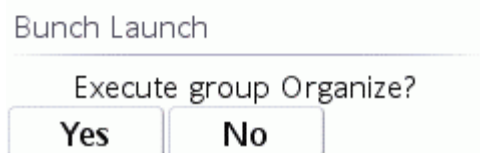
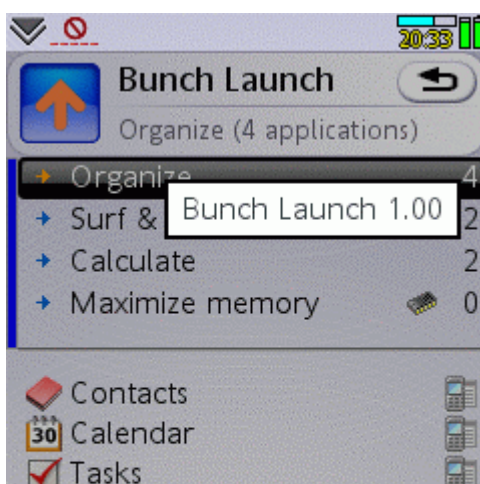
To start processing a group, issue the *Execute group* command from the toolbar or the Main menu. At this point the *Executive module* of Bunch Launch is called with the selected group's number passed as parameter.

First a confirmation dialog is displayed by the module, allowing you to cancel starting up programs, which may come handy if you happened to include an application which causes a conflict.

After confirmation, the applications included in the group are launched one by one. Programs are started according to their order in the application list. After starting all programs, the application marked for foreground display (if any) is made visible on screen.

When all applications have been processed, a dialog appears showing a report of started programs as well as memory status. After dismissing the dialog the Executive module is cleared from memory. You can choose not to display start and end confirmations in the *Group options* dialog.

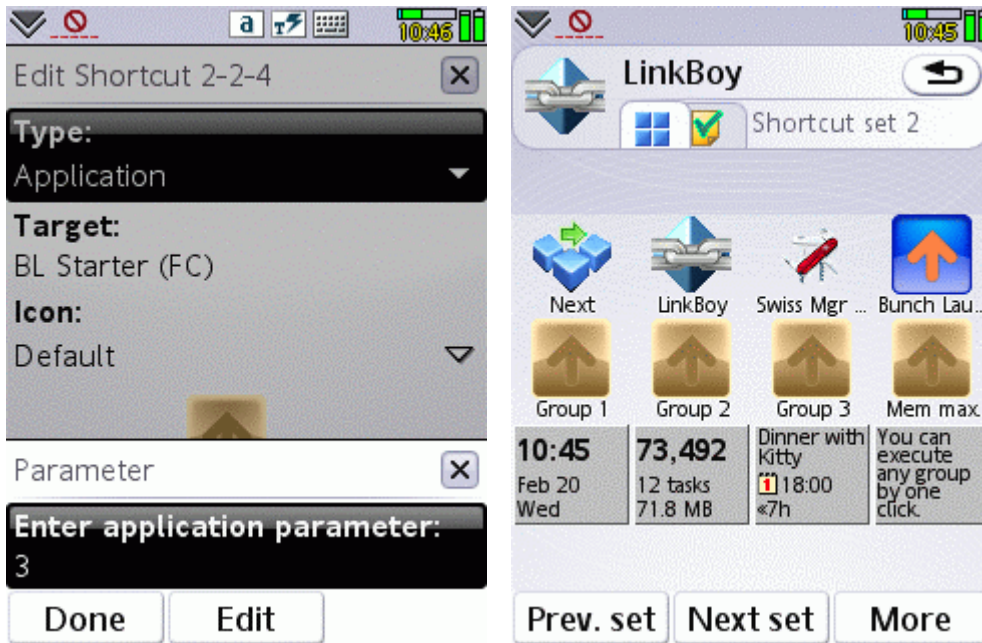
The details of group execution (like notifications and delays) can be configured in the *Group options* dialog (see above).



BL Starter

BL Starter is bundled with Bunch Launch as an optionally installed companion program. BL Starter instantly executes one of the groups defined in Bunch Launch.

When invoked from the Main menu, BL Starter processes the default group. This behavior, however, can be changed by forwarding a desired group number to BL Starter when it is started. To do this, you need an application launcher that supports passing parameters to the invoked program. *LinkBoy* 1.50 and above have such feature, so you can have separate shortcuts for each of your favorite groups.



General

Q: Why do I need Bunch Launch?

A: Bunch Launch comes handy when you notice you manually load several applications to use them alternately, like for performing some cooperative task. Bunch Launch does this automatically for you, quickly bringing the phone to the desired state. You can set any number of programs to be started up at once. Bunch Launch can also be used as a standard application launcher, with convenient selection of arbitrarily categorized programs.

Q: How does Bunch Launch differ from other application launchers?

A: The main difference is the unique ability to start up any number of selected applications at once. Several groups of programs can be defined for this purpose. The main feature is supported by numerous additional services (delays, messages, memory cleanup) that you can configure.

Q: Which phones is Bunch Launch compatible with?

A: Bunch Launch can be installed and executed on all smartphones running on Symbian 9.x with UIQ 3.x.

Q: How do I start using Bunch Launch?

A: If you let the program create the default groups then you can start using it right away. Select a group in the upper list, examine what programs it contains, then issue the *Execute group* command to load all those programs. After some tests you can customize the groups according to your needs. You can delete current members from a group, and can add any installed programs to the group. A rich set of options is also available separately for each group and each application within it.

Q: What additional uses exist for Bunch Launch?

A: In addition to starting up multiple programs, you can also use Bunch Launch as your generic application launcher, or to release memory by closing programs. See details in the next two FAQ items.

Q: Can I use Bunch Launch to organize and start all my applications?

A: Yes, that is one possible use of Bunch Launch. You can categorize all your frequently used programs to groups for convenient access. You can launch the programs as they are needed by the *Start* command, without executing the whole group.

Q: Can I use Bunch Launch to have more memory available?

A: Yes, Bunch Launch is able to purge current tasks out of memory, thus providing more free operating memory for running programs. One of the default groups demonstrates this kind of use. The group does not contain any application to start, and the *Maximize memory* group option is set.

Q: What is the Executive module?

A: The component of Bunch Launch that does the actual startups is called the *Executive module*. When you issue the *Execute group* command, the Executive module is invoked with the selected group's number passed as a parameter. The module then loads applications, displays confirmations and information messages, and cleans up memory if requested. After performing all configured tasks the module exits completely. The Executive module can be invoked separately from the main Manager module of Bunch Launch. When the group number is not passed then the default group is executed.

Q: Can I autostart programs using Bunch Launch?

A: The distributed package of Bunch Launch does not offer this service. However, if some mechanism invokes the Executive module at boot time then it will process the default group. In addition, the *BL Starter* companion for Bunch Launch can directly execute any of the groups by one click, when used in conjunction with *LinkBoy* 1.50 and above. Executing groups with BL Starter is actually more useful than having an autostarter that only works at boot-time and with the default group.

Configuration

Q: Can I change the groups created by Bunch Launch?

A: Yes, absolutely. You can clear the whole group, or delete its member programs one by one, and select other applications for inclusion in the group. The *Group options* dialog can be used to change details of the behavior.

Q: How does the default group differ from others?

A: The default group is the one which is processed when the *Executive module* does not receive the group number as a parameter from its caller program. In this way, the default group does not differ from the others, as long as you use the standard Bunch Launch interface to execute groups.

Q: What are the icons shown on the right side of the application list?

The icons represent how the applications are started up. Applications can be started in the background or the foreground, as defined in the *Group options* dialog. One program can be selected for each group which will be brought to foreground when all members of the group have been processed.

Q: What is the role of the Maximize memory option?

A: It is for making more room in memory to run programs. When the option is on then the currently running applications are ended, before the programs present in the executed group are started up.

Q: Can I prevent other applications from running when I start a group?

Yes. The *Maximize memory* group option results in eliminating programs from memory, before starting the group members begins.

Q: Can I exclude an application from being closed by memory maximization?

Programs that are present in the group are not closed, so just add the application that you want to preserve to the group.

Q: What are the delays in the group options?

A: In the *Application options / Time* dialog you can set a delay that Bunch Launch should wait before starting to launch programs. This facility may come handy when the group is started up by accessing the Executive module from another program. The delay to wait between loading applications can also be set for each group separately. Increase the application delay if you experience any conflict when launching programs in fast sequence.

Q: Does Bunch Launch have support for the flip keypad?

A: The Executive module is flipmode-aware, that is group execution can behave differently depending on the current flip mode. The Manager module itself works in flip open mode only, which is more appropriate for convenient configuration. Using the *Flip state* selector you can specify how loading each program should depend on the flip state.

Q: Can I change the order of starting programs?

A: Yes. Place the focus on the application list, select the application to be moved, and use the arrow buttons on the left-hand side of the toolbar to move it up- or downwards. On non-touchscreen phones identical commands are present in the *Navigate* submenu.

Application start

Q: How do I select programs for starting?

Select a group in the list, and press the *Add* toolbar button, or use the *Add applications* menu item. A list of installed applications appears where you can select one or more programs to include in the group.

Q: How many programs can I start at once?

The number of programs that can be handled by Bunch Launch is not limited. However, it is not recommended to start more applications than you will actually use, to save memory.

Q: How can I execute a group on a non-touchscreen phone?

A: The *Execute group* command is found in the *Manage* submenu.

Q: Can the execution process be interrupted?

Depending on what is set for *Group options / Display / Start notification*, a confirmation dialog can be displayed by the Executive module, before processing the group. Select *No* in the dialog if you do not want to execute the group. This option may come handy if the Executive module was invoked by some automatic mechanism, and the group contains a misbehaving application.

Q: Why does some program crash when started from Bunch Launch?

A: Some programs may not be prepared to be loaded invisibly in the background in fast sequence. If such problem occurs, try increasing the delay between starting applications, and/or start the group in the foreground.

Q: Can I execute a group without running Bunch Launch?

A: Yes, using the BL Starter companion of Bunch Launch, which is an optional installable component. See more details in the next FAQ item.

Q: What is BL Starter?

A: BL Starter is optionally installed with Bunch Launch, and allows the instant execution of any group. The group to be processed can be passed to BL Starter when it is invoked. If the group number is not passed, then the default group is executed. *LinkBoy* 1.50 and above support passing parameters to applications, so you can have separate shortcuts for any group. BL Starter can be considered as a better solution as an autostarter. While an autostarter is restricted to work only when the phone is rebooted, BL Starter provides the most straightforward and versatile way of bringing your phone to a desired state, any time.

We at CellPhoneSoft hope you enjoy using Bunch Launch, and find it useful in making your smartphone a more pleasant experience. Thank you for using our product!