

## LinkBoy User Guide

### Purpose

LinkBoy provides up to 45 shortcuts to frequently used tasks, that can be displayed on the standby screen, or used as a standalone link collection. Shortcuts are available for the full range of applications, phone settings, multimedia files, web pages, contact actions, and common tasks. Special shortcuts like application functions and active items are also available.

LinkBoy is most useful on phones whose standby screen offers only a few static shortcuts and has big unused space in the middle of the screen - that is, the P990. On other phones you can still find a similar use for LinkBoy by adapting its appearance to the available unused space on the standby screen. On all UIQ3 phones, LinkBoy can be used independently of the standby screen, as a standalone, highly configurable collection of custom shortcuts.

### Compatibility

LinkBoy can be installed and executed on all smartphones running on Symbian 9.x with UIQ 3.x. Some features that require the presence of a touch-screen are not available on phones that do not feature a touch-screen.

### Installation

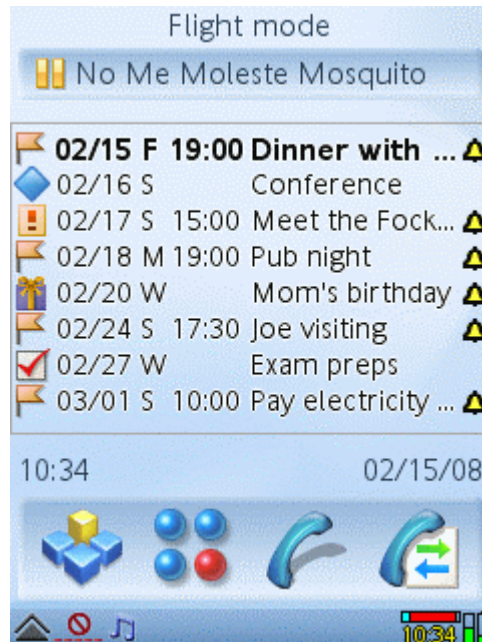
The distribution package can be installed directly by using the PC install program, or after uploading the .sis file to the phone. Refer to your phone's User Guide for details on installing.

## Icon panel

The part of the screen occupied by the icons provided by LinkBoy is called the *icon panel*. Each icon on the panel represents a *link* to some action that you can define. These links are actually *shortcuts* to execute an application, to view a file, or to perform other common tasks. Three independent sets of shortcuts are available, one of which is visible at any time.

The icons themselves are represented by *images* that you can change. Each icon can have a customizable *caption* as well that helps you to remember what the shortcut does. LinkBoy comes with a predefined set of shortcuts that you can change at will using the *Shortcut editor* (see below).

The icon panel is displayed on LinkBoy's *Shortcuts view*, and over the *standby screen* (only on phones that have such screen). The icon panel is hidden when neither the LinkBoy application nor the standby screen is displayed. The icon panel either displays the shortcuts, or details for certain shortcut types, like a list of upcoming events, or a sticky note.



## Shortcuts view

LinkBoy has two page views, the left one of which is called the *Shortcuts view*.

The Shortcuts view displays the icon panel and lets you check its appearance after changing options in the *Panel options* view. You can also execute and edit individual shortcuts as described below.

- To *select* a different shortcut set, tap one of the set selector buttons (or use respective menu commands).
- To *execute* a shortcut, tap its icon for a short time.
- To *edit* a shortcut, keep its icon tapped for about one second.
- To *select* a shortcut without executing it, use the navigation keys or the jog dial if available.
- To *execute* the selected shortcut, press the Confirm key briefly.
- To *edit* the selected shortcut, keep the Confirm key pressed for one second.

You can use the shortcuts over the standby screen the same way as in the Shortcuts view. However, over the standby screen selection keypresses are available only when the phone is in non-touchscreen mode, like when the flip is closed on the P990.



## Panel options view

The right-side page view is for configuring the appearance of the icon panel as a whole. The settings affect the currently selected shortcut set; you can have different customization for each set. To change individual shortcuts use the *Shortcut editor* (see below).

Options available in the Panel options view are the following:

- **Rows:** Set the number of rows of shortcuts that you want to have on the icon panel. You can have one, two or three rows.
- **Columns:** Choose the number of icons that you want to display in each row. Altogether you can display up to fifteen shortcuts on the icon panel for each shortcut set.
- **Alignment:** Choose the alignment to use for arranging icons and captions within the space allocated for each shortcut. Icons for more than three columns are always centered.
- **Icons:** Set the required size of the shortcut icons. You can also choose to not display icons at all, like when you want to see the wallpaper in full. The visibility of the icons does not affect the functionality of the shortcuts.
- **Captions:** Set the required size for text captions displayed under shortcut icons. Active shortcuts grow by one line when captions are set to None.
- **Frames:** Select the frame type that will surround the borders of shortcuts. Using frames is mainly useful when icon display is turned off.
- **Colors:** Select the color scheme used for captions and frames. The *Dark* scheme is suitable for light themes, while the *Light* scheme is for dark themes.
- **Transparency:** Use the slider control to set the degree of transparency of the icon panel. When transparency is fully turned off, the icon panel has a white background.

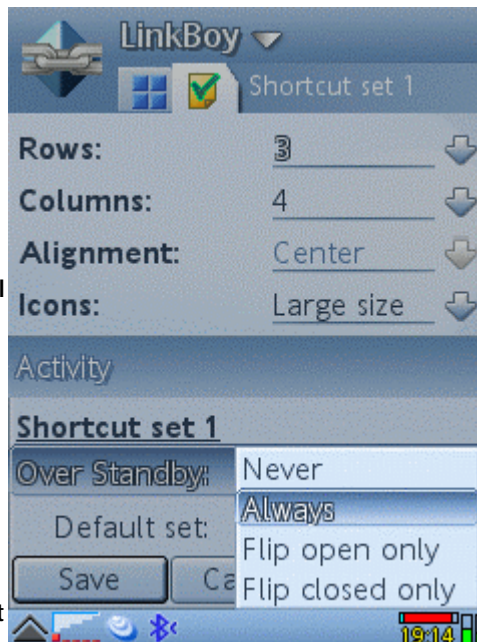


## Activity

Activity options for the selected shortcut set can be configured in a separate dialog. The Activity dialog is launched from the respective command present in the main menu of the *Panel options view*. These options are available only on phones that have a Standby screen.

Available settings are the following:

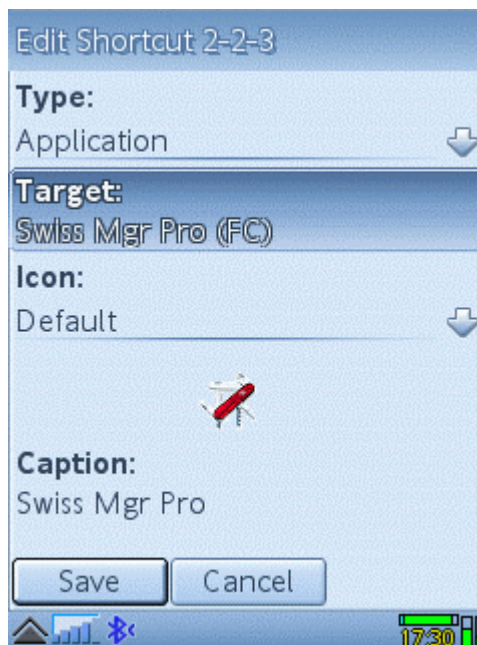
- **Over Standby:** Select the way you want the icon panel appear over the Standby application.
  - *Never*: select if you do not want to use the current shortcut set over the Standby application.
  - *Always*: select to allow displaying the set over the Standby screen, independently of the flip mode.
  - *Flip open only*: select to display the set in flip open mode only.
  - *Flip open only*: select to display the set in flip closed mode only.
- **Default set:** Check the option to make the shortcut set selected whenever the icon panel appears over the Standby screen.



## Shortcut editor

The Shortcut editor serves for changing the function and appearance of individual shortcuts. The editor is invoked by long-pressing on the icon whose shortcut you want to change. Available shortcut settings are the following:

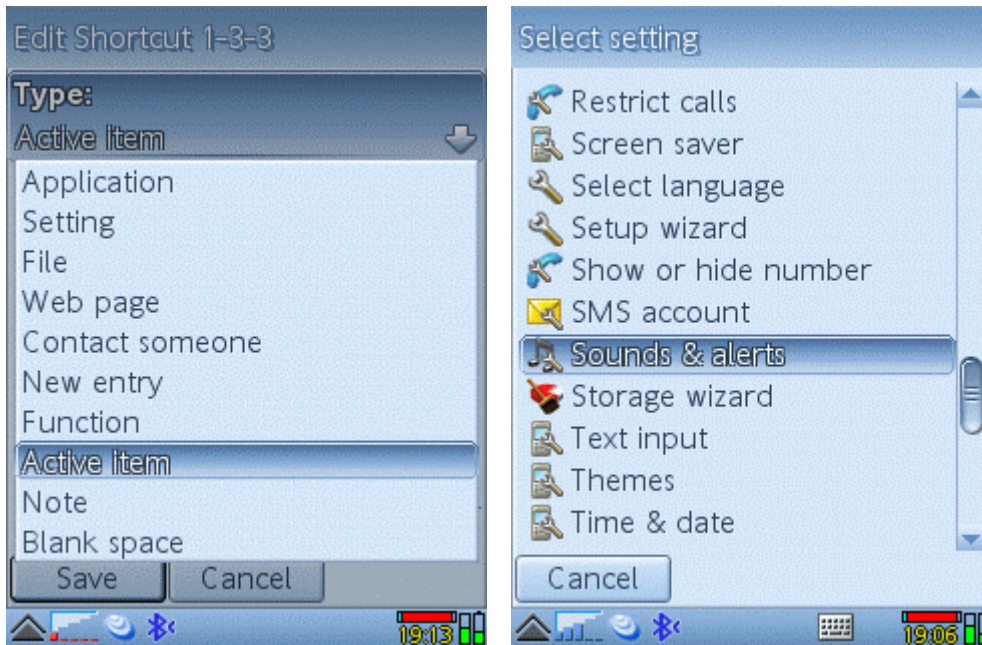
- **Type:** Select what kind of shortcut you want to have (see details below).
- **Target:** Define the target of the shortcut, that is the exact action to be performed when the shortcut is executed (see details below).
- **Icon:** Browse your phone's multimedia directories for selecting an image for the shortcut. You can choose any image format supported by your phone, including BMP, GIF, JPG, PNG, and SVG. Large images are automatically scaled down to fit within the icon area. The standard icon sizes are 40x40 and 18x18 pixels for large and small icons, respectively.
- **Caption:** Change the default caption text for the shortcut.
- **Parameter:** This option is available in the menu of the editor for Application shortcuts. You can enter a parameter that will be passed to the application when it is executed from a shortcut. It depends on the invoked application whether and how it processes the parameter.



## Shortcut types and targets

LinkBoy supports a wide variety of shortcut types, so that you can point your shortcuts to virtually anything on the phone. Available shortcut types include:

- built-in or installed *Application*;
- system *Setting*;
- multimedia *File* (picture, video, sound, document);
- *Web page*;
- *Contact* action (call, SMS, MMS, Email);
- *New entry* for various common tasks, like appointment, contact, sound recording;
- *Function* of LinkBoy, like switching to another shortcut set;
- *Active item* that displays current information about calendar Events, Memory status, or Time and date;
- *Note* to use as a reminder on the screen;
- *Blank space* to leave certain screen areas without an executable shortcut.

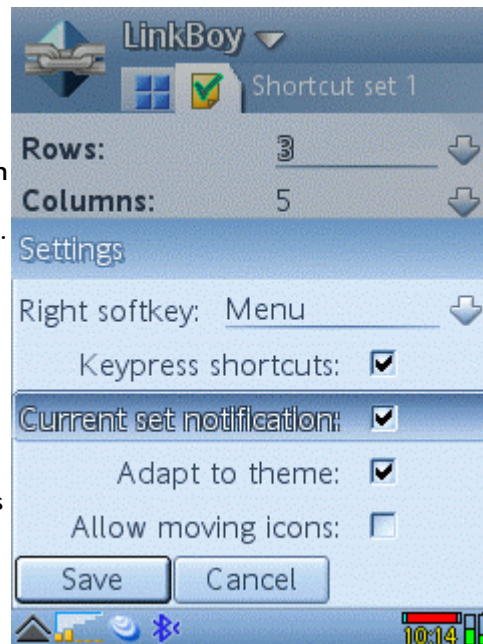


Defining a shortcut is completed by choosing a *target* which can be executed or viewed. Target selection is done using one or two additional dialogs which depend on the selected shortcut type. For the *Web page* type you are prompted to enter an URL. Similarly, the *Note* type prompts for entering text.

## Settings

Use the Settings dialog to change options that affect the behavior of the application as a whole. Available settings are the following:

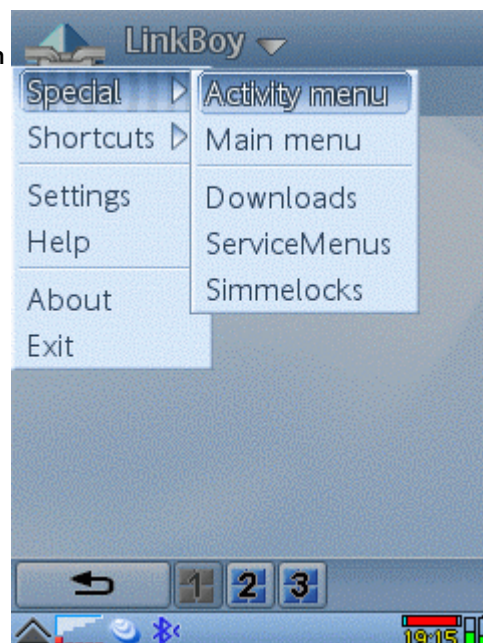
- **Right softkey:** Select the action to be performed when the right softkey is pressed in flip closed mode. This option is available only on phones that have a flip keypad.
- **Keypress shortcuts:** Check the option to use the numeric buttons as hotkeys to the respective shortcuts.
- **Current set notification:** Check the option to display screen messages whenever you switch to another shortcut set.
- **Adapt to theme:** When this option is set, active items are painted using the theme skin for buttons.
- **Today menu observing:** Check the option to hide or display the icon panel, depending on the open/closed status of the standby screen's Today menu. Disable the option if you experience some conflict, which may depend on the theme used. This option is available only on phones whose standby screen has a Today menu (P1, M600, W950, W960).
- **Allow moving icons:** Check the option to make the icon panel movable by touching the screen. To move the icon panel, set the option, then invoke the standby screen, and drag the icon panel using the stylus. This option is available only on phones that have a touch-screen and a standby screen.



## Special menu

The Special menu is available in the Shortcut view's main menu. Using the menu you can invoke the two basic built-in applications of your phone, Activity menu (also called Standby or Home) and Main menu (also called Applications).

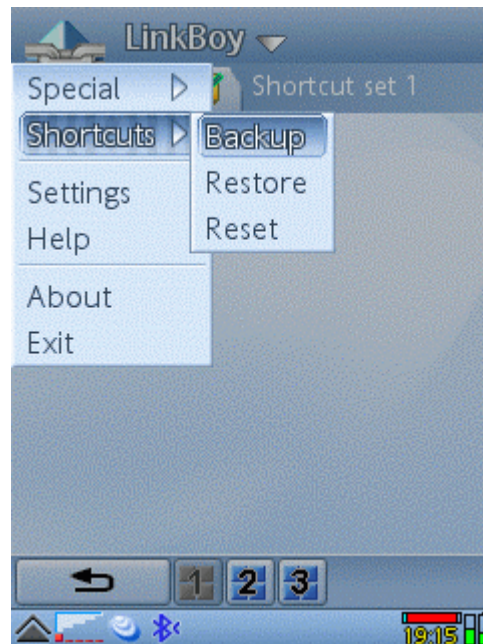
Additional menu items allow you to invoke some phone-dependent extras that are not normally accessible from application launchers. On SonyEricsson phones you can launch the *Service menus* (also known as secret or hidden menu) which allows you to test phone functions and format the internal memory (be careful with using that option!).



## Shortcuts menu

The Shortcuts menu is available in the Shortcut view's main menu. It contains commands for managing the persistence of your shortcuts:

- **Backup:** The current shortcuts are saved in the `\other\Backup\LinkBoy\LinkBoy.sct` file on the memory card (if available). You can transfer the backup file to other phones for exchanging shortcut sets.
- **Restore:** The backed up shortcuts are loaded to replace the current ones.
- **Reset:** Current shortcuts are reverted to the default set.



## Flip closed mode

When the flip is closed LinkBoy appears and works similarly like in flip open mode. An important difference is, however, that in flip closed mode you can access the shortcuts by keypresses only.

If one of the shortcut sets is marked as *Standby FC* then that set is displayed whenever the flip is closed.

While LinkBoy's icons are displayed over the standby screen, the visible parts of the latter are dimmed. This is an operating system feature to indicate that the visible background application does *not* process keypresses.

The following keypress functions are available when LinkBoy is displayed over the Standby screen in flip closed mode:

- **Jog dial:** Select shortcuts horizontally.
- **Navigation keys:** Select shortcuts horizontally and vertically.
- **Confirm:**
  - when no shortcut is selected: invoke the *Main menu* application.
  - when a shortcut is selected, on short press: execute the selected shortcut.
  - when a shortcut is selected, on long press: invoke the shortcut editor for the selected shortcut.
- **Left softkey:** Invoke the *Call log* application.
- **Right softkey:** Bring up the More menu to select another shortcut set, restore Linkboy's full view, or hide the icon panel.
- **Back:** Bring the Standby application to foreground. Note that accessing the Standby application's keypress functions requires that it is in the foreground.
- **Other keys:** Clear the selection.



## LinkBoy FAQ

### General

**Q: Why do I need LinkBoy?**

**A:** LinkBoy provides extra shortcuts to execute applications or to view files, thus extending the functionality and ease of use of your smartphone.

**Q: What are the advantages of using LinkBoy?**

**A:** Major advantages of using LinkBoy include the following:

- You can choose (1) to display LinkBoy's icon panel over the standby screen, or (2) to use it separately as a standalone link collection, or (3) both.
- You can have up to fifteen more shortcuts on the standby screen than otherwise.
- Three independent sets of shortcuts provide up to 45 shortcuts in total.
- On the standby screen you can still see operator, area message, media player, alarm, and timer.
- On the flip open standby screen you can still use keypresses to navigate built-in shortcuts, furthermore to switch silent mode and phone lock.
- You can also have the extra shortcuts with the flip closed.
- You can execute or view practically anything that you have on your phone.
- You can select any image to display as a shortcut icon, including large or transparent ones.
- You can have customizable captions below each shortcut icon.
- You can access the *Service menus* without remembering keypresses.
- LinkBoy comes with fully pre-configured shortcuts to instantly help your work (and you can change everything to exactly match your needs).

**Q: Which phones is LinkBoy compatible with?**

**A:** LinkBoy can be installed and executed on all smartphones running on Symbian 9.x with UIQ 3.x. Occupation of the standby screen is naturally possible only on those phones that have a Standby application.

**Q: How much memory does LinkBoy use?**

**A:** LinkBoy with its default configuration uses less than half a Megabyte of RAM while running. Memory consumption may increase if you choose to display large custom images as shortcut icons.

**Q: Why does LinkBoy display a security warning when installed?**

**A:** LinkBoy accesses your contacts database, therefore you are prompted to authorize this activity. The contacts database is exclusively used for reading contact names and images when you choose to have a shortcut to contact someone.

### Configuring the icon panel

**Q: How do I change LinkBoy's appearance?**

**A:** The right-side page tab of LinkBoy is called the *Panel options view*. It is used to configure how the currently selected shortcut set appears on the icon panel. The available display options are adjusted independently for each shortcut set. The *Settings* dialog is used for general options that affect all shortcut sets. The function and appearance of individual shortcuts is set using the *Shortcut editor*.

**Q: How to set which shortcuts are shown on the standby screen?**

**A:** A separate *Activity* dialog is provided for that purpose, available in the main menu of the Panel options view. For each shortcut set you can separately define if the set should appear over the standby screen. In case of phones having a flip keypad you can also define if the set is to appear in one flip mode only. If you have more than one set displayed then you can set one of them as the *Default set* which will appear when the icons are re-displayed over the standby screen.

**Q: How to change the number of shortcuts?**

**A:** In the Panel options view you can select how many rows and columns of shortcuts you want to display. You can have up to 3 rows and 5 columns, thus providing a maximum of 15 shortcuts for each set.

**Q: What to do if I can not see the captions well?**

**A:** Set the Captions option to *Large size*. You can also use the Colors selector for better adapting the captions to the current theme.

**Q: Can I have smaller icons?**

**A:** Yes, for changing the icon size use the *Icons* selector in the Panel options view. You can also use custom icons for individual shortcuts, as set using the *Shortcut editor*.

**Q: Can I see more of my wallpaper?**

**A:** Yes, there are several ways of achieving that:

- Use less icons by changing the number of rows and/or columns displayed.
- Set the icons to small size, or use small custom icons.
- Set the icons and captions to none (you can still see where the shortcuts are by having frames).
- Move the icon panel to a more suitable place (first enable the move option in the Settings dialog).
- Use the *Blank space* shortcut type for leaving additional space empty.

## Changing shortcuts

**Q: How do I change a shortcut?**

**A:** You use the *Shortcut editor* dialog to define what exactly a shortcut should do. The editor is invoked by touching the respective icon for about one second. In the absence of a touch-screen, first select the shortcut to be changed with the hardware keys, then keep the Confirm key pressed for about one second. Within the Shortcut editor first select a shortcut type, then specify the exact target for the shortcut. A default icon and caption is provided for each target, that you can change at will.

**Q: What kinds of shortcuts does LinkBoy provide?**

**A:** Shortcut are available for the following items:

- All built-in and installed *applications*.
- All system *settings* that are present in the Control panel.
- All multimedia *file* types for which your phone has a viewer.
- Any *web* site or individual web page.
- Communications with individual *contacts*, like call, SMS, MMS or Email to a person.
- Creating a *new entry* for built-in applications, like Calendar, Notes, Sound recorder, and more.
- LinkBoy *functions*, like switch to another shortcut set, or hide the icon panel.
- *Active items* that display current information about calendar events or memory status.
- *Notes* to use as sticky reminder on the screen.
- *Blank space* to leave certain screen areas without an executable shortcut.

**Q: Can I make a shortcut for Bluetooth?**

**A:** Yes, by selecting *Setting* as the shortcut type, and then selecting Bluetooth as the target. You have the full range of Applications and Settings available on your phone to define as a shortcut.

**Q: Can I make a shortcut for sending SMS to someone?**

**A:** Select *Contact someone* as the shortcut type, then select the contact (and optionally the phone number) from the list, and finally select the communication method (like SMS) to use with the shortcut.

**Q: Can I make a shortcut for setting a new appointment?**

**A:** Select *New entry* for shortcut type, then Appointment as the target. The target selector for the New entry type lets you have shortcuts for a wide range of common tasks.

**Q: Can I make a shortcut for a web page?**

**A:** Select *Web page* for shortcut type, then enter the target URL in the appearing text input field.

**Q: Can I make a shortcut for a video file?**

**A:** Select *File* for shortcut type, then choose the file in the appearing file selector dialog. You can have a shortcut to view any multimedia file type for which your phone has an assigned viewer application.

**Q: Can I change the caption?**

**A:** Yes, you can change the provided default caption for each shortcut using the *Caption* field in the shortcut editor.

**Q: Can I customize the icons?**

**A:** To change the icon displayed for any shortcut, use the *Browse* option in the Icon selector. You can choose any image format supported by your phone, including BMP, GIF, JPG, PNG, and SVG. Large images are automatically scaled down to fit within the icon area. For best results, use 40x40 and 18x18 pixels images for large and small icon sizes, respectively.

**Q: What are Active items?**

**A:** You can have dynamic information displayed on the screen. Such special "shortcuts" are called Active items:

- The *Upcoming event* target displays the next calendar or alarm event.
- The *Memory status* target shows available free memory in Kilobytes.
- The *Note* shortcut type shows arbitrary text that you enter.

**Q: Can I change the appearance of Active items?**

**A:** The *Adapt to theme* option in the Settings dialog lets you have the Active items taking the appearance of buttons, as defined by the current theme. When the caption is empty for an Active item (or captions are off for the entire shortcut set), the size of Active items grows to occupy the whole shortcut area, allowing to display more information.

**Q: Can I leave empty space between shortcuts?**

**A:** Yes, by using the *Blank space* shortcut type. You can also set the number of columns to 1 or 2, and use the *Alignment* option to put the icons at the desired place.

**Q: Can I display a longer Note?**

**A:** Yes, by setting empty caption for the Note, in which case longer text is displayed. In addition, when executing the Note, you can see the entire text displayed on the icon panel.

**Q: Why are my contact images lost when upgrading to 1.40?**

**A:** In LinkBoy 1.40 the loading speed of contact shortcuts was improved dramatically, which resulted in some incompatibility with contact shortcuts defined using previous versions. For such shortcuts the default application image is shown instead of contact pictures. To solve the issue, just enter the Shortcut editor and re-select the same contact as the target for the shortcut.

## Using LinkBoy

**Q: How do I execute a shortcut?**

**A:** To execute a shortcut touch the respective icon for a short time. On phones or flip modes that do not provide a touch-screen, first select the shortcut using the navigation keys, then press the Confirm key.

**Q: Can I execute shortcuts by keypress?**

**A:** Yes, by pressing the Confirm key, after selecting the desired shortcut with the navigation keys.

**Q: Can I see more than one calendar event?**

**A:** Yes. When you execute an Event shortcut, a list of upcoming events is displayed. All events are shown that are within one month from the current time and fit on the icon panel. Events that have an associated alarm are marked by a bell symbol on the right hand side. To return to displaying the shortcuts, click on the icon panel, or press any key.

**Q: Can I save and restore my shortcuts?**

**A:** Yes. To save your current shortcuts, use the *Shortcuts/Backup* command, available in the main menu. The *Restore* command can later be used to re-load the backed up shortcuts. This mechanism is useful if you want to return to a more suitable collection of shortcuts that you saved earlier as a backup. Note that backups are for shortcuts only, and do not include Panel options and general Settings.

**Q: What happens if I reset my shortcuts?**

**A:** When you use the *Shortcuts/Reset* command, your current shortcuts are lost, and replaced by the default shortcuts provided by LinkBoy. You can use the *Restore* command to load the custom shortcuts saved earlier by the *Backup* command.

**Q: Can I still use the Standby application with LinkBoy?**

**A:** Yes, absolutely. One of the key concepts of LinkBoy is to leave the Standby application (called Activity menu on the P990) undisturbed, while supplementing it with more shortcuts. Standby is a fundamental built-in program of the SonyEricsson UIQ3 phones that has many useful features, like displaying status plugins (operator, area message, media player, radio, timer), and providing access to key lock and volume controls. LinkBoy does not interfere with the display functions at all, and with the keypress functions in flip open mode. In flip closed mode you can use the Back key to allow using the Standby application's keypress functions.

**Q: How can I quickly access my LinkBoy shortcuts?**

**A:** The shortcuts are automatically displayed whenever the Standby application comes to foreground. The following methods can provide additional access to LinkBoy:

- On SonyEricsson phones that do not have a flip keypad (P1, M600, W950, W960) you can assign LinkBoy to one of the built-in shortcuts provided by the Standby application.
- On the P990 in flip open mode you can use the Status icon of *Swiss Manager Pro* to invoke Linkboy, either as a running task, or as a Favorite.
- On the P990 in flip closed mode you can assign LinkBoy to one of the four configurable built-in shortcuts available on the standby screen.
- On the Motorola Z8 phone you can bind LinkBoy to the right softkey of the Home application.

**Q: Why my shortcuts do not appear on the Standby screen?**

**A:** Make sure that at least one of the shortcut sets is active over the standby screen, using the Activity dialog for the respective set. If the icon panel still does not appear, then disable the *Today menu observing* option in the Settings dialog.

**Q: Why does transparency not work on my P1?**

**A:** On P1 phones with firmware versions R6F41 and above, floating windows lose transparency over the Standby application's client area. The problem affects LinkBoy's icon panel, which is displayed with opaque gray or black background on such phones. SonyEricsson has confirmed this problem, and a workaround will be provided as soon as available.

*We at CellPhoneSoft hope you enjoy using LinkBoy, and find it useful in making your smartphone a more pleasant experience. Thank you for using our product!*