

Product referenced: Swiss Manager UIQ3 1.10  
Document version: 1.10

## Swiss Manager User Guide

### Purpose

Swiss Manager is a composite system utility for UIQ smartphones. It provides task manager, file manager and system information services, giving you more access to and more knowledge about your phone. Swiss Manager can be considered as essential addition to your UIQ phone.

### Compatibility

Swiss Manager can be executed on smartphones running on Symbian 9.x with UIQ 3.x. Compatible devices include the SonyEricsson P990, M600, and W950 phones.

### Installation

The distribution package can be installed directly by using the PC install program, or after uploading the .sis file to the phone. Refer to your phone's User Guide for details on installing.

### General

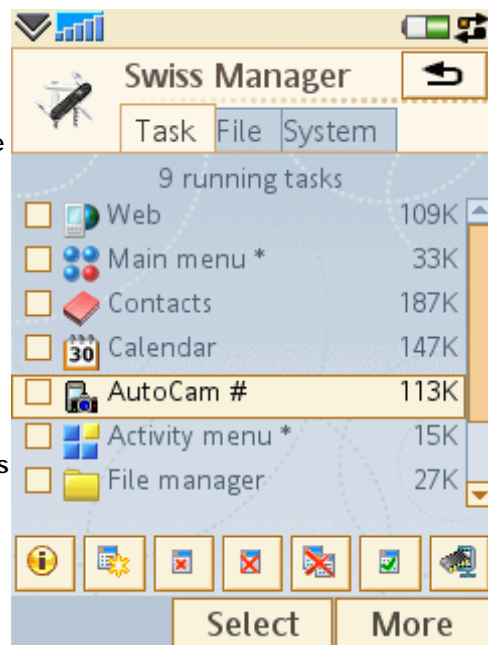
Swiss Manager has three separate views, each representing one of its three distinct functions. You can switch between the *Task*, *File* and *System* views by tapping their respective tab on the screen, or by the left/right arrow keys. At the bottom of the screen there is a button bar that provides fast access to the most frequently used commands for each view. Additional commands are present in the main menu of Swiss Manager.

### Task view

The Task view lists currently running programs along with their memory consumption in kilobytes. System tasks that are not to be closed under normal circumstances are marked by an \* asterisk. Tasks that are excluded from the *End all tasks* command are marked by a # sign.

Commands available for the Task view are the following:

- | **Task info:** Shows some useful information about the selected task.
- | **Switch to task:** Bring the selected task to foreground. You can also switch to a running task by tapping on its name on the task list.
- | **End task:** Request the selected task or all marked tasks to perform their normal shutdown process. Programs that are essential for the phone's basic functions can not be exited.
- | **Kill task:** Attempt to end the selected task immediately. Only use this option if a task can not be exited normally, via the *End task* function.
- | **End all tasks:** Extend the *End task* command to all running tasks. Use this option when you do not work with the currently running programs any more and want to release all possible memory.
- | **Toggle exclusion:** Toggle the participation of the selected task in the *End all tasks* command. Exclude those tasks that you want to preserve running when a manual or automatic *End all tasks* command is issued.
- | **Reclaim memory:** Maximize the amount of free memory without ending tasks.

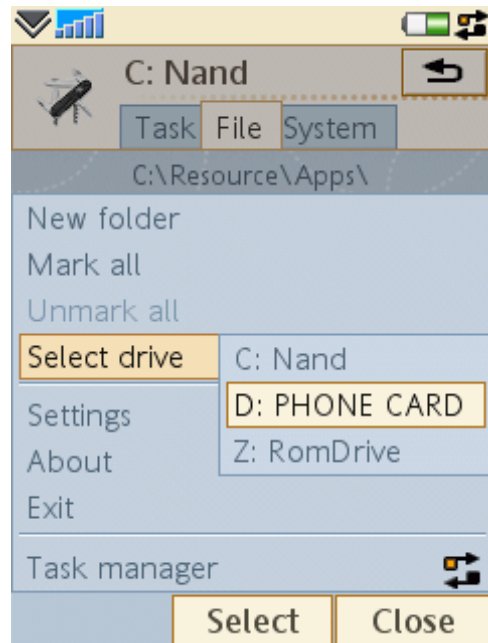
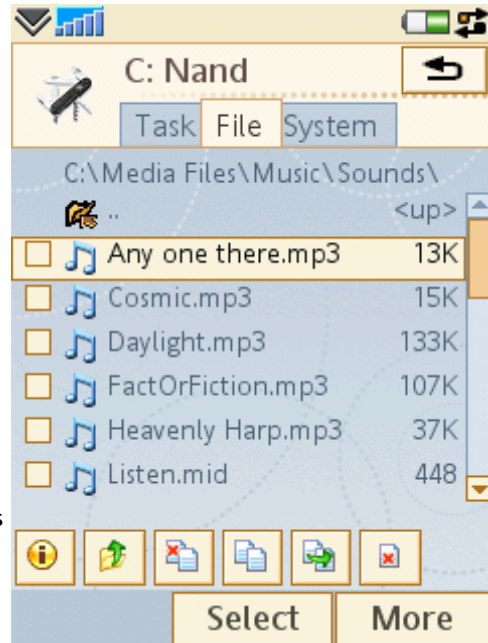


### File view

The File view lets you navigate the file system of the phone. The size of files is indicated on the right in bytes (or Mega/Kilobytes, depending on their magnitude). To enter a displayed folder, tap on its name on the list. To go one level up in the directory hierarchy, tap on the uppermost ".." item or use the *Folder up* button. To invoke the viewer for a file, tap on its name on the list.

Commands available for the File view are the following:

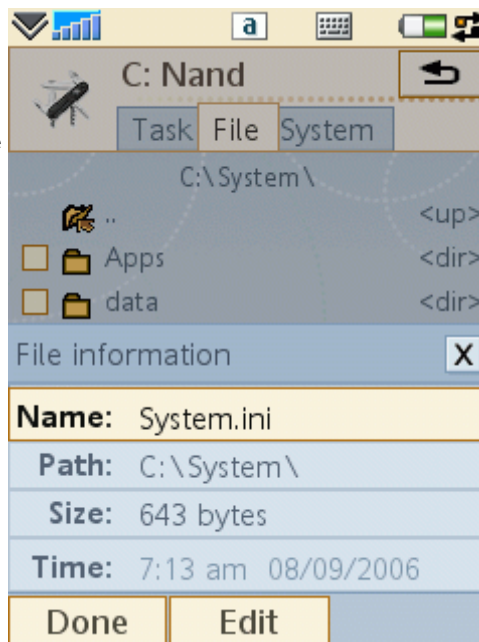
- | **File info:** Brings up a dialog window that displays information about the selected file or folder. You can rename the file or folder.
- | **Folder up:** Display the folder one level upwards.
- | **Cut:** Prepare the selected or marked files and/or folders for moving to another location.
- | **Copy:** Prepare the selected or marked files and/or folders for copying to another location.
- | **Paste:** Execute the last *Cut* or *Copy* command, by copying or moving files and/or folders to the currently displayed folder.
- | **Delete:** Permanently remove the selected or marked files and/or folders.
- | **New folder:** Create a new subfolder in the currently displayed folder. This command is available in the menu.
- | **Select drive:** Change the drive whose contents is displayed in the view. This command is available in the main menu and the drop-down *category menu* in the upper-right part of the screen on phones that support this feature.



**File information**

This dialog shows the main properties of the selected file or folder.

To rename the displayed item, change the contents of the *Name* field and press the *Done* button.



**System view**

The System view provides information about the most important characteristics of the phone. The following items are listed:

- | *Device:* The IMEI number (unique device identifier) is shown.
- | *Time:* The system uptime (elapsed time since the phone was last restarted) is shown.
- | *RAM:* The amount of free RAM (operative memory) is shown in Megabytes and percents of the total.
- | *Drives:* The amount of free space on Drive C: is shown in Megabytes and percents of the total.
- | *CPU:* The speed of the CPU (central processing unit) is shown in Megahertz.
- | *Display:* The number of display colors is shown. Note that this value may be lower than the true color capability of the screen.
- | *Applications:* The number of installed applications is shown.
- | *Battery:* Battery level is shown in percentages.

Commands available for the System view are the following:

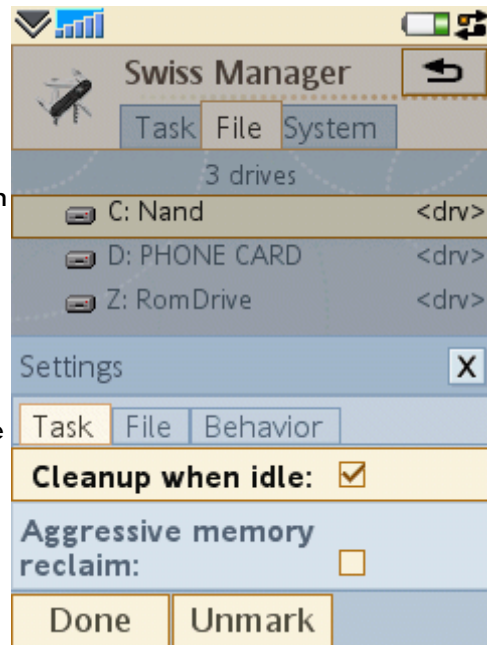
- | **Details:** Displays further information that are related to the item currently selected in the list. You can also tap on an item on the list to display the same detail dialog.



**Settings - Task**

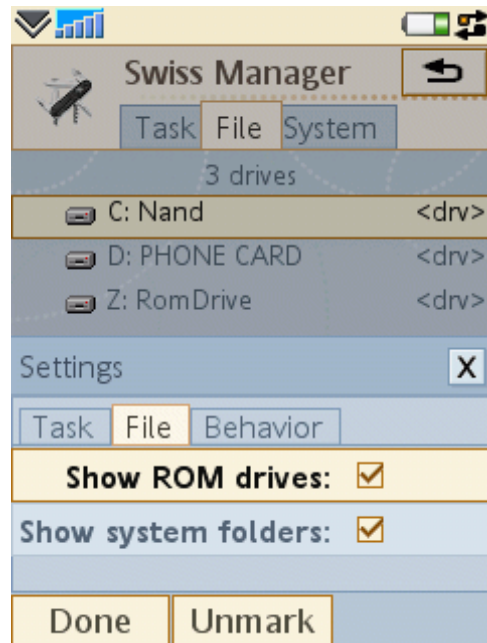
Use the provided options to set the behavior of the task manager.

- | **Cleanup on closing the flip:** Check the option to instruct Swiss Manager to automatically perform the *End all tasks* command whenever you close the flip. This option is only available on phone models that have a flip keypad.
- | **Cleanup when idle:** Check the option to automatically perform the *End all tasks* command when the default screen is displayed and a certain amount of idle time has elapsed.
- | **Aggressive memory reclaim:** Check the option to use a more forceful method to release memory. When this method is used, the built-in Task Manager application's Recent list will be cleared during the process.

**Settings - File**

Use the provided options to set the behavior of the file manager.

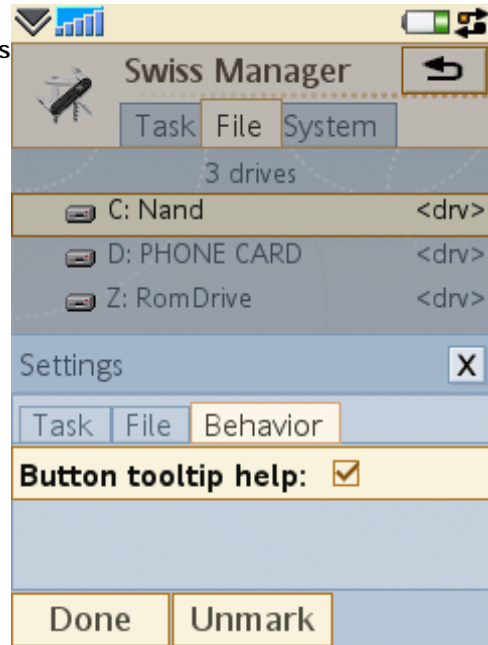
- | **Show ROM drives:** Check the option to have access to read-only drives that are not intended to be visible to users.
- | **Show system folders:** Check the option to include those folders in the file navigator that are not intended for accessing by users.



### Settings - Behavior

Use the provided options to fine-tune the behavior of Swiss Manager.

1 **Button tooltip help:** Check the option to display a short help text when command buttons are pressed.



## Swiss Manager FAQ

### General

**Q: Why do I need Swiss Manager?**

**A:** Swiss Manager provides a combination of system services that is unique on UIQ3 phones at the time of its release. With Swiss Manager you can perform task and file management operations that far exceed what the built-in programs can do. You can also discover more about your phone's internal features by Swiss Manager's system information services.

**Q: How does Swiss Manager differ from other system utilities??**

**A:** At the time of its release, there is no other comparable third-party utility available for UIQ3. With Swiss Manager you have more information and more access to your phone than provided by the built-in task and file manager programs.

**Q: Which phones is Swiss Manager compatible with?**

**A:** Swiss Manager UIQ3 can be installed and executed on all smartphones running on Symbian 9.x with UIQ 3.x. Such phones include the SonyEricsson P990, M600 and W950.

**Q: What all those buttons at the bottom of the screen do?**

**A:** When you tap on them, the buttons display "self-help" for a short time. To see the help without executing the command, tap on the button and then drag the stylus away from the button before releasing it. Once you are familiar with the button commands, you can disable the help in *Settings/Behavior*.

### Task management

**Q: I'm familiar with SMan. How does Swiss Manager compare?**

**A:** SMan is a popular task manager program widely used on UIQ2 devices. Swiss Manager brings to you the same and more services on your UIQ3 phone. The comparison table below is intended to help those who are familiar with SMan.

Term used in SMan	Corresponding function in Swiss Manager	Notes
Flush tasks	End all tasks	Same functionality, including exclusions.
Flipclose flush	Cleanup on closing the flip	With Swiss Manager you can perform automatic cleanup also on those phones that have no flip keypad, using the <i>Cleanup when idle</i> option.
Snapshot, Flush exclude	Toggle exclusion	Swiss Manager uses a more straightforward solution instead of the "snapshot". You are in full control in determining which tasks are excluded and included in the <i>End all tasks</i> command, by using the <i>Toggle exclusion</i> button. You also have visual feedback as the excluded tasks are marked by a "#" sign on the task list.
Forced endtask	Kill task	Same functionality.
Compress heap	Reclaim memory	Same functionality. Note that on UIQ3 phones you need to use the <i>Aggressive memory reclaim</i> option to achieve significant memory release.

**Q: What is the difference between "End" and "Kill" a task?**

**A:** The *End task* command requests the application in question to perform its normal shutdown procedure and then to exit gracefully. The *Kill task* command is more forceful, giving less chance for an application to clean up after itself and save its data. Normally always only use the *End task* command. Kill is mainly for "runaway" programs that are impossible to get rid of otherwise.

**Q: What does "Toggle exclusion" mean?**

**A:** When you tap on the *Toggle exclusion* button, the selected application will be excluded from the *End all tasks* command, whether it is executed manually or during an automatic cleanup. This means you can have automatic cleanup activated but avoid closing those apps that you want always running. The button itself is a toggle, so you can mark/unmark the selected task. When

marked for exclusion, a '#' sign is present after the task's name on the list. The feature is similar to taking a "snapshot" in SMan UIQ2, but you have full control and visual feedback about exclusions.

**Q: Why an asterisk is shown along some of the task list items?**

**A:** The asterisk is shown for those tasks that are marked as "system" applications. Some of these applications are essential for the phone's correct operation and you can not end or kill them.

**Q: Why little or no RAM is freed when using the Reclaim memory command?**

**A:** The *Reclaim memory* command uses the operating system's standard function for releasing unused memory. This function may not be efficient in certain firmwares. To maximize the efficiency of the *Reclaim memory* command, turn on the *Aggressive memory reclaim* option in *Settings/Task*.

**Q: What is the "Aggressive memory reclaim" option?**

**A:** If you set that option then Swiss Manager uses an alternative, more forceful method for releasing memory. This procedure is likely to give you more free RAM, but it has the side-effect of clearing the built-in Task Manager's Recent list.

**Q: How comes that when I reclaim memory the built-in Task Manager "forgets" its Recent list?**

**A:** This occurs when you request Swiss Manager to perform aggressive memory reclaim. Turn off the *Aggressive memory reclaim* option in *Settings/Task* if you want to preserve the Recent list.

**Q: Do the kilobytes shown on the task list represent true memory usage?**

**A:** On UIQ3 phones the answer is no, as the necessary system function is disabled. Instead, only the code size of the executable behind the task is displayed, as reported by the system. This value is much less than the real memory consumption of the running program. To have a better idea about the true memory usage of a task, you need to end it and observe how much memory have been released.

## File management

**Q: What is a "protected folder" and why I can not view them?**

**A:** Protected folders are *lsys* and *\Private* on UIQ3 phones. Access to these folders is restricted by the data caging feature of the Symbian 9 operating system. You can not enter such folders and can not see their contents. You can stop listing protected folders by unchecking the corresponding option in *Settings/File*.

**Q: How do I rename a file?**

**A:** Tap on the *File info* button to bring up the *File information* dialog. In the dialog the name of the file or folder is editable. Press the *Done* button to rename the file to the name you entered.

**Q: How do I copy or move a file to another location?**

**A:** Select or mark the file(s) and/or folder(s) you want to copy or move. Press the *Copy* button for copy, or the *Cut* button for move. Navigate into the directory that you want to make the target of the operation. Press the *Paste* button to perform the action. Note that the Cut operation will delete items from the original location.

**Q: How can I create a new folder?**

**A:** The main menu has a *New folder* item. Enter the name for the new folder and press *Done*.

**Q: Why do I see a "Viewer not found" message when tapping on a file?**

**A:** For standard media file types your phone has an associated built-in viewer. When such association does not exists for a certain file, a default message is displayed by the operating system.

**Q: How can I quickly switch to another drive?**

**A:** Use the *Select drive* menu item or the drop-down *category menu* on the upper-right part of the screen, depending on your phone model.

**Q: Why most buttons are disabled when I browse the Z: drive?**

**A:** In your phone there are one or more so-called ROM drives that are read-only. Therefore, any

function which includes writing to the file system is disabled when browsing a ROM drive. You can however copy files from a ROM drive and then paste them to another (read-and-write) drive. You can stop listing ROM drives by unchecking the corresponding option in *Settings/File*.

### System information

**Q: Why only 4096 colors are shown for my M600?**

**A:** The number of colors displayed by Swiss Manager is reported by a corresponding system function. This value tends to be much lower than the true number of colors that the phone can indeed display. The true color display capability is described in your phone's user manual.

**Q: How can I see the free space on the memory stick?**

**A:** Select the *Drive C: free* item in the list and tap on it to see further details about your phone's drives, including the available space on the memory stick (Drive D:).

*We at CellPhoneSoft hope you enjoy using Swiss Manager, and find it useful in making your smartphone a more convenient device. Thank you for using our product!*